



DLP-PU Series

Power Supply Parallel or Redundancy Module

- OR-ing Diodes Included
- Alarm Signals
- LED Indicators
- DIN Rail Mounting

Key Market Segments & Applications

- Industrial Controls: Motor Control Systems
- Factory Automation: Process Control, Automotive, Chemical Processing
- Test & Measurement: Burn-in & Test, Instrumentation Measurement

DLP-PU Features and Benefits

Features

- Internal O Ring Diodes
- Can Connect Two Units in Parallel
- Output Voltage Monitoring (Via relay)
- DIN Rail Mounting

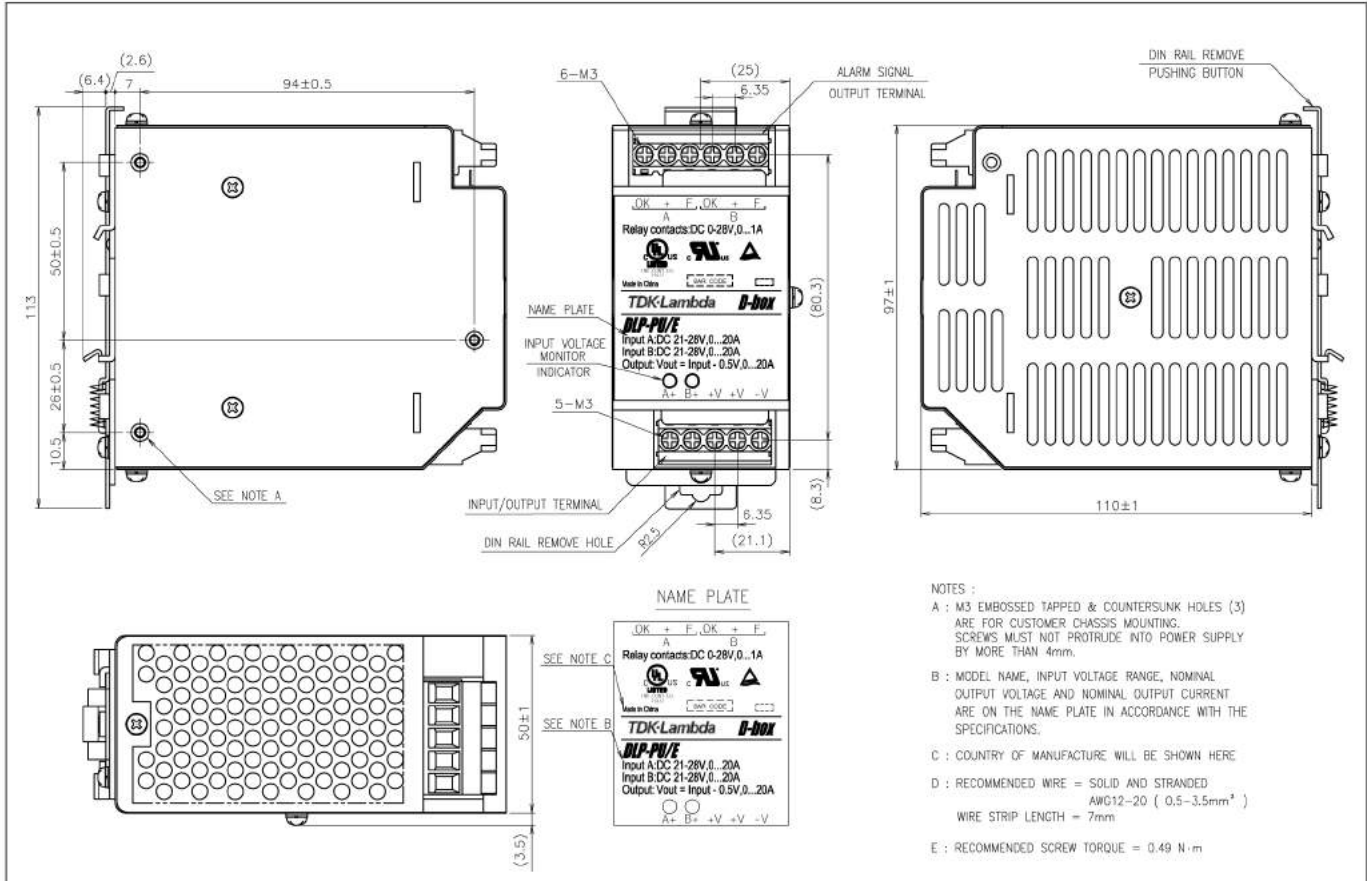
Benefits

- Allows Redundant Operating
- Enables System Scalability
- Remote Alarm Notification
- Easier System Integration

Specifications

ITEMS	MODELS	DLP-PU/E
Input Voltage Range	VDC	21 - 28
Number of inputs	-	Two
Maximum Input Current	A	20 per input
Maximum Output Current	A	20
Overcurrent protection	-	None
Voltage Drop	VDC	0.5
Maximum Reverse Voltage	VDC	35
LED Indicators	-	Two green LEDs indicating each input is "good"
Input Voltage Alarm	-	Relay off when input is <19.2V (±1%) or > 30V (±5%). NO and NC contacts
Relay contact rating (max)	-	28VDC, 1A or 120VAC, 0.5A (5mA minimum recommended)
Cooling	-	Convection
Operating Temperature	°C	-10 to +70, derate linearly to 60% from 60 to 70
Storage Temperature	°C	-30 to +85
Humidity	-	Operating: 30 - 90%RH, Storage: 10 - 95%RH (non condensing)
Withstand Voltage	-	Input or Output-Chassis, Input or Output-Relay Contacts, Relay Contacts to Chassis; 500VAC for 1 min.
Isolation Resistance	-	Input or Output-Chassis, Input or Output-Relay Contacts, Relay Contacts to Chassis; >10M Ohms at 25°C, 70%RH and 500VDC
Vibration	-	Non operating, mounted on DIN Rail, 10-55 Hz (sweep for 1 min), 9.8m/s ² constant X, Y, Z each for 1 hour
Shock	-	196m/s ²
Safety Agency Approval	-	UL60950- 1, CSA60950- 1, EN60950- 1, UL508, CSA22.2 No.14, EN60529 IP20, EN50178 Cat 1
Size	mm/in	50 x 97 x 110, (1.97x 3.81 x 4.33)
Weight	g	470
Warranty	yrs	3 Years

Outline Drawing DLP -PU Series



Block Diagram DLP-PU Series

